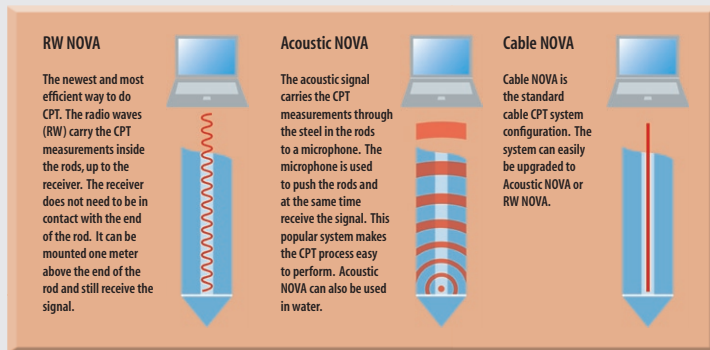


# NOVA CPT (Cone Penetration Testing)



New cordless cone and data transmission technology makes logging quicker and easier!

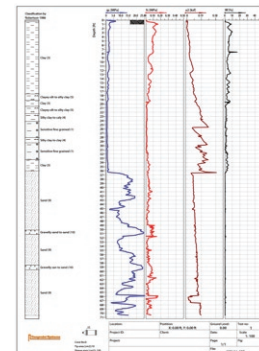
- The only CPT probe industry-wide that provides a constant stream of real-time data while you're probing ... without a cord downhole.
- The only data transmission system of its kind.
- Operator does not have to manage data cable as the rods are cycled in and out of the sounding hole. Rod handling is efficient and the risk of cable damage is eliminated.
- New, RW NOVA technology uses radio waves to transmit measurements back to the receiver, opening the door for cordless SCPT, downhole video camera capabilities, and other data collecting sensors.
- Data transmission methods: Acoustic NOVA, Cable NOVA, RW NOVA
- New cone design offers 18 bit resolution with improved strength and gauge measurement accuracy.
- Repeatable penetration results
- Rod bore can be used for lubrication grouting as rods are pushed into the ground and for retraction grouting as rods are retrieved
- Can be used with multiple push platforms: drill rigs, cone trucks, Geoprobe® direct push machines.
- Interpret results quickly with user-friendly CPT-PRO software for comprehensive data evaluation.



Basic components of the RW NOVA CPT system (clockwise from the left): Instrumentation Cords, Depth Encoder, Computer Interface, RW NOVA Receiver, and RW NOVA Transmitter assembled to the NOVA CPT Probe.

Complete your CPT investigation with CPT-PRO Soil interpretation Software for calculating engineering parameters and soil behavior classifications. CPT-PRO is a program for the reporting and evaluation of CPT tests and is used when more than just the basic log produced by the CPT logging software is required.

- Present CPT results
- Identify soil types using the most common CPT soil behavior classifications
- Calculate and present Geotechnical parameters
- Standard penetration test (SPT) blow count correlation
- Undrained shear strength
- Relative density
- Friction angle
- Coefficient of lateral stress



CPT-PRO log.



1-800-436-7762 • www.geoprobe.com